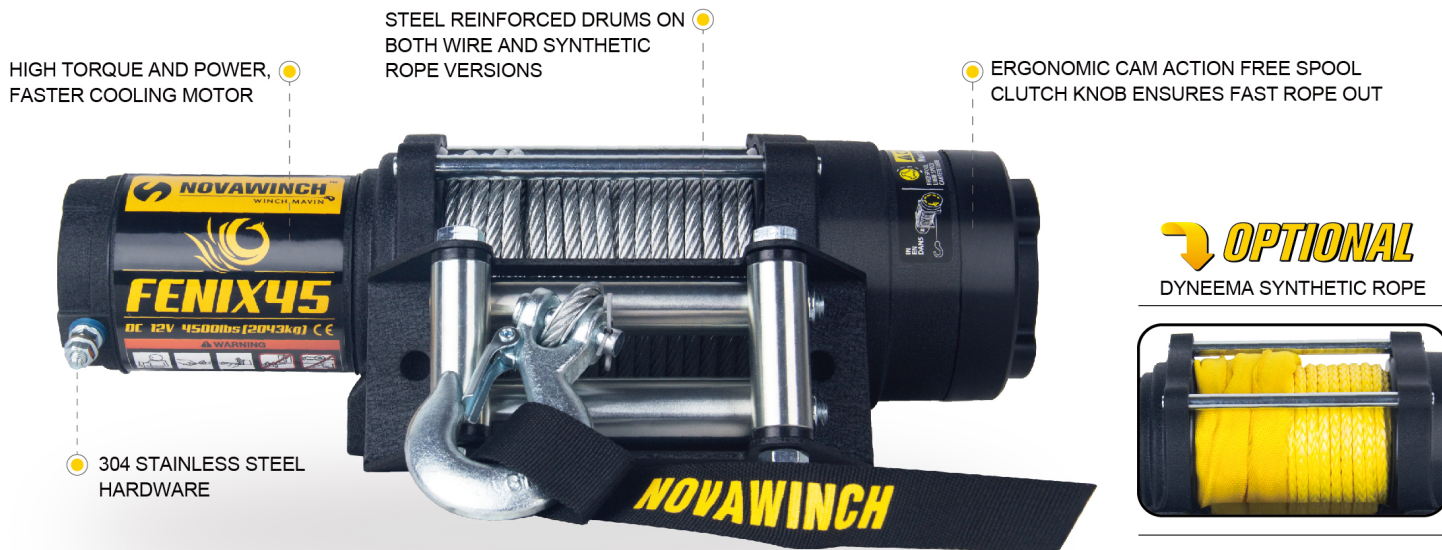


FENIX SERIES WINCH 4500-2500lbs

HIGH PERFORMANCE ATV/UTV WINCHING POWER

The Novawinch Fenix winch provides the high-end power, versatility and durability that serious powersport users demand.



HIGH EFFICIENCY

High efficiency, low amp draw, sealed permanent magnet motor featuring mechanical load holding and dynamic brake.



INTENSITY

All steel planetary gear twice as wide as those used by the competition and utilizing machined-in, oil pocket bronze bearings.



WATER RESISTANCE

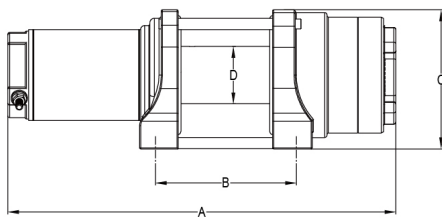
Extremely IP67 water resistance on motor, gearbox and both drum sides.



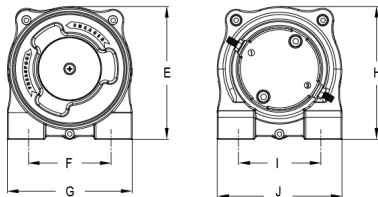
SECURITY

Weather sealed contactor with circuit breaker protected.

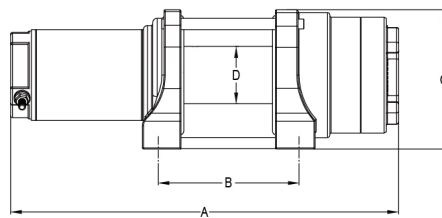




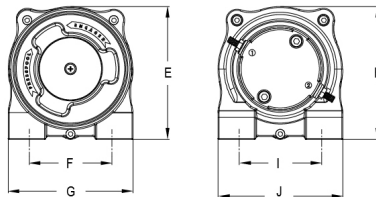
A=13.3"(338mm) B=4.9"(124mm)
C=4.8"(123mm) D=Φ2"(50mm)



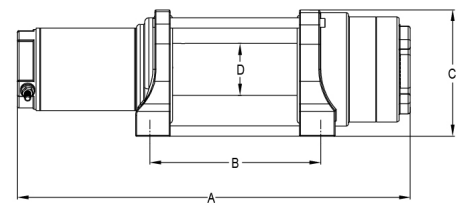
E=5"(123mm) H=5"(123mm)
F=3"(76mm) I=3"(76mm)
G=4.5"(115mm) J=4.5"(115mm)



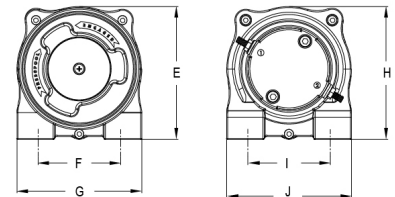
A=13.5"(343mm) B=4.9"(124mm)
C=4.8"(123mm) D=Φ2"(50mm)



E=5"(123mm) H=5"(123mm)
F=3"(76mm) I=3"(76mm)
G=4.5"(115mm) J=4.5"(115mm)



A=15.2"(387mm) B=6.6"(168mm)
C=4.8"(123mm) D=Φ2"(50mm)



E=5"(123mm) H=5"(123mm)
F=3"(76mm) I=3"(76mm)
G=4.5"(115mm) J=4.5"(115mm)

FENIX2500

SPECIFICATIONS:

Rated line pull: 2500lbs(1135kgs)

Motor: DC 12V: 3.0hp/2.3kW

Gearing: 3-stage planetary

Gear ratio: 140:1

Braking:

Mechanical, Automatic, Load Holding

Freepool Clutch: Ergonomic Control

Fairlead: 4-way roller fairlead

Wire rope: 3/16" x49.8'(Φ4.8 x 15.2m)

Drum Size: 2.0" x3.1" (50mm x 78mm)

Dimensions:

13.3" L x 4.5" D x 4.8" H
338mm L x 115mm D x 123mm H

Bolt Pattern: 3.0" x 4.9" (76mm x 124mm)

Net Weight: 18 lbs (8.2kg) with wire rope

12V DC Line speed and motor current (First layer)

| Line pull | | Line speed | | Motor current |
|-----------|------|------------|-----|---------------|
| lbs | kgs | FPM | MPM | Amps |
| 0 | 0 | 26.0 | 7.9 | 25 |
| 2500 | 1135 | 10.5 | 3.2 | 162 |

FENIX3500

SPECIFICATIONS:

Rated line pull: 3500lbs(1589kgs)

Motor: DC 12V: 4.1hp/3.1kW

Gearing: 3-stage planetary

Gear ratio: 140:1

Braking:

Mechanical, Automatic, Load Holding

Freepool Clutch: Ergonomic Control

Fairlead: 4-way roller fairlead

Wire rope: 7/32" x49.8'(Φ5.4 x 15.2m)

Drum Size: 2.0" x3.1" (50mm x 78mm)

Dimensions:

13.5" L x 4.5" D x 4.8" H
343mm L x 115mm D x 123mm H

Bolt Pattern: 3.0" x 4.9" (76mm x 124mm)

Net Weight: 20 lbs (9.1kg) with wire rope

12V DC Line speed and motor current (First layer)

| Line pull | | Line speed | | Motor current |
|-----------|------|------------|-----|---------------|
| lbs | kgs | FPM | MPM | Amps |
| 0 | 0 | 24.0 | 7.3 | 19 |
| 3500 | 1589 | 10.2 | 3.1 | 190 |

FENIX4500

SPECIFICATIONS:

Rated line pull: 4500lbs(2043kgs)

Motor: DC 12V: 3.7hp/2.8kW

Gearing: 3-stage planetary

Gear ratio: 191:1

Braking:

Mechanical, Automatic, Load Holding

Freepool Clutch: Ergonomic Control

Fairlead: 4-way roller fairlead

Wire rope: 15/64" x55.7'(Φ6.0*17m)

Drum Size: 2.0" x4.9" (50mm x 124.5mm)

Dimensions:

15.2" L x 4.5" D x 4.8" H
387mm L x 115mm D x 123mm H

Bolt Pattern: 3.0" x 6.6" (76mm x 168mm)

Net Weight: 22 lbs (10kg) with wire rope

12V DC Line speed and motor current (First layer)

| Line pull | | Line speed | | Motor current |
|-----------|------|------------|-----|---------------|
| lbs | kgs | FPM | MPM | Amps |
| 0 | 0 | 15.0 | 4.6 | 21 |
| 4500 | 2043 | 5.5 | 1.7 | 230 |